

Product Profile



MATCO-NORCA

Introduction

Matco-Norca is the leading supplier of globally sourced, code-compliant Plumbing & PVF products for use in residential, commercial and industrial applications.

Our strength lies in our ability to provide quality products and value-added services quickly, while having the ability to price competitively.

Customer satisfaction has built Matco-Norca into the largest independent sourcing company for **Valves, Fittings & Nipples, Faucets & Plumbing Specialties for the Plumbing, Heating, Industrial, Waterworks and Irrigation Markets.**

Specifically, our broad product offering allows you to service residential, commercial and industrial applications with confidence because of Matco-Norca's commitment to quality and service.

We employ professional inspectors overseas to audit and inspect our factories and products. Our people ensure that each factory is certified to the international ISO-9002 quality system standard and that every product is carefully tested to meet our strict quality requirements and comply with local U.S. codes.

The value of responsive local service is part of Matco-Norca's heritage.

We stock what you need, and ship in a timely manner. Our national distribution centers are located in California, Texas, Illinois, Georgia and New York.

Lastly, putting a face to a name is important to us all. That's why there's always a local Matco-Norca Sales Representative and Customer Service Associate ready to serve you.

Visit **www.matco-norca.com** for more information or contact your local sales representative.



Certifications & Approvals

Matco-Norca is committed to maintaining a high standard of quality for all the products we offer. Most products in this catalog are labeled with a designated approval or certification code. Below is a brief description of these approvals.

	ADA American Disabilities Act — Protecting the rights of people with physical or mental disabilities.
	ANSI American National Standards Institute — Organization that coordinates work among U.S. Standards writing groups; Works in conjunction with other groups such as ISO, ASME, ASTM, etc.
	ASME American Society of Mechanical Engineers — Develops standards and testing criteria for finished products.
	ASSE American Society of Sanitary Engineering — Develops standards and qualifies products for plumbing and sanitary installations.
	ASTM American Society for Testing Materials — Develops standards for materials, products, systems and services.
	AWWA American Water Works Association — Promotes public health through improvement of water quality. Develops standards for valves, fittings and equipment.
	CSA Canadian Standards Association — Develops standards, tests and qualifies products used in gas lines and gas appliance installations.
	FM Factory Mutual — Develops standards and qualifies products for use by the general public.
	ISO International Organization for Standardization — A worldwide organization that develops and publishes International Standards with the premise of answering a fundamental question: "What's the best way of doing this?" The ISO 9000 family addresses various aspects of quality management.
	MSS Mechanics Standardization Society of the Valves & Fittings Industry, Inc. — A committee of manufacturers that develops technical codes and standards for the valve & fitting industry.
	NACE National Association of Corrosion Engineers — Equips society to protect people, assets and the environment from the adverse effects of corrosion.
	NSF NSF International — An organization committed to public health that writes standards and certifies products for food, water and consumer products.
	SDWA The Safe Drinking Water Act — Is the main federal law that ensures the quality of Americans' drinking water. Under SDWA, EPA sets standards for drinking water quality and oversees the states, localities, and water suppliers who implement those standards. Weighted average lead content of water contact components must be 0.25% or less.
	UL Underwriter's Laboratory — Tests and qualifies valve and fittings products under UL standards for safety.
	UPC Uniform Plumbing Code — Developed by the International Association of Plumbing and Mechanical Officials to govern the installation and inspection of plumbing systems as a means of promoting the public's health, safety and welfare.
	USC University of Southern California — Foundation for Cross-Connection Control and Hydraulic Research that lists approved backflow prevention assemblies.
	WS Water Sense — A U.S. Environmental Protection Agency (EPA) program designed to encourage water efficiency in the United States through the use of a special label on consumer products.

Valves

Brass Ball Valves

- Lead Free Version Available
- Forged Brass, Cast Brass and Bronze
- Full Port & Standard Port
- CSA, NSF and UL/FM Approved
- Up to 600 WOG
- Threaded Ends Comply with ANSI/ASME B1.20.1, Solder Ends Meet ANSI B16.18
- Available with Locking Handle
- Specialty Types: Pex Ends, Male X Female, Uni-Flange, Compression Ends, Press, Push Connect, F1960 Cold Expansion

Gas Valves

- Forged Brass; One and Two Piece
- Female X Female, Female X Flare, Flare X Flare
- CSA and UL/FM Approved
- 1/2 PSIG and 5 G

Brass & Bronze Check Valves

- Lead Free Version Available
- Up to 300 WOG
- Integral, Neoprene, BUNA and Metal Seat
- In-Line, Swing Type, Y Pattern
- Threaded Ends Comply with ANSI B2.1, Solvent Ends Comply with ANSI B16.18

Brass & Bronze Gate Valves

- Lead Free Version Available
- Cast Brass and Bronze B62
- Full Port; Up to 300 WOG
- Rising Stem and Non Rising Stem
- UL/FM Approved
- Threaded Ends Conform to ANSI Standards B2.1, Solder Ends Comply to ANSI Standards B16.18
- Valves are Tested in Accordance with MSS-SP-82

Brass Globe Valves

- Lead Free Version Available
- Up to 200 WOG
- Threaded and Sweat Ends
- Soft and Hard Seats
- Straight and Angled Pattern
- Long Bonnet and Screwed Bonnet

Bronze Y Strainer

- Lead Free Version Available
- Up to 400 WOG
- 18 and 40 Mesh Stainless Steel Screen - Up to 100 Mesh Available
- Threaded Ends Comply with ANSI B2.1, Solder Ends Comply with ANSI B16.18



Brass Ball Valves



Gas Valves



Brass & Bronze Check Valves



Brass & Bronze Gate Valves



Brass Globe Valves



Bronze Y Strainer

Contact your local sales representative about other available products

Valves

Aztec Low Pressure Valves

- Lead Free Version Available
- Garden Valves, Boiler Drains, Sillcocks, Hose Bibbs, Loose Key Valves & No Kink Valves
- Brass - Graphite Packing
- 125 PSI

Boiler Drains

- Lead Free Version Available
- Brass Body, Full Flow
- 125 WOG
- Male x Female, Solder Inlet
- With or Without Stuffing Box
- Wheel or Cross Handles

Garden Valves

- Lead Free Version Available
- Brass Body
- Up to 150 WOG
- Bent and Inverted Nose
- Hose X FIP

Sillcocks

- Lead Free Version Available
- Brass and Chrome Plated Brass Body
- Up to 150 WOG
- Frost Free Sillcock with or without Vacuum Breaker, Pex Ends, Cold Expansion x Pex Available
- Large Flange Available
- Hose X FIP, Hose X SWT, Hose X MIP
- CSA, IAPMO and ASSE Approvals

Hose Bibbs

- Lead Free Version Available
- 125 WOG
- Cast Brass, Forged Brass, Chrome Plated, Rough Chrome & Rough Brass Finishes
- Plain End and Hose End Outlets
- FIP Inlet, FIP Inlet - Flanged, MIP Inlet,
- Hose X MIP, Hose X FIP, Hose X Solder, Hose X Solder Inlet



Aztec Low Pressure Valves



Boiler Drains



Garden Valves



Sillcocks



Hose Bibbs

Contact your local sales representative about other available products

Valves

CPVC Ball Valves

- NSF Approved
- 100 PSI @ 180°F
- PTFE Seat Seals
- EPDM "O" Ring
- Complies with ASTM D2846

Non-Metallic Valves

- PVC & CPVC
- Stop, Stop & Waste, No-Kink Boiler Drain Valve
- Solvent & Threaded Ends

PVC Ball Valves

- White & Gray, For Sch. 40 & Sch. 80 Pipe
- Full Port, Single Union & True Union
- NSF Approved
- 150 PSI @ 73°F
- Threaded Ends Comply with NPT ANSI B2.1 and ANSI B1.20.1, Solder Ends Comply with ASTM D2466 and D2467

PVC Check Valves

- 200 PSI at 77°F (25°C)
- In-Line Valve - Spring Loaded
- Single Union
- Stainless Steel Spring

PVC True Union Ball Valves

- Sch. 80 PVC Body, Gray Color
- Full Port
- 150 PSI @ 73°F
- Teflon Seat Seals, EPDM "O" Ring
- Solvent and Threaded Ends
- Unique Double Union/Double Block Design



CPVC Ball Valves



PVC Ball Valves



PVC True Union Ball Valve



Non-Metallic Valves



PVC Check Valves

Contact your local sales representative about other available products

Valves

Oil Tank Valves

- Brass
- Oil Tank Valve and Oil Barrel Faucet
- Locking Lever
- MIP X MIP, MIP X Flare, MIP X Plain or GHT Spout. MIP X GHT Zamac Spout

Back Flow Preventors

- Lead Free Version Available
- Brass, Bronze Body - Brass or Chrome Plated Finish
- ASSE Standard 1011, 1012, and 1024, UPC, IAPMO and CSA Approved
- Up to 175 PSI
- Up to 250°F. Max. Backflow Temp.

Foot Valves

- Lead Free Brass
- 200 WOG
- Threaded Ends
- Stainless Steel Screen
- BUNA-N Seat
- End of Line Application



Oil Tank Valves



Radiator Heating Valve

Float Valves

- Float Valve, Float Rod, Evaporator Cooler Float Valve, Evaporator Cooler Valve
- Brass and Bronze
- 125 WOG
- Rod Size - 1/4" - 20, 5/16" - 18 and 3/8" - 16
- MIP Inlet-Plain Outlet, MIP Inlet-MIP Outlet, FIP Inlet-Plain Outlet

Radiator / Heating Valves

- Brass & Bronze Body Heavy Pattern Available
- Up to 200 WOG
- Steam and Hot Water Radiator Angle Valve, Radiator Gate Valve, Convector Valve, Coin Key Valve
- FIP X Male Union, FIP X Female Union, SWT X Male Union
- Steam and Radiator Valves - Straight, Angle, Adjustable



Back Flow Preventors



Stop Valves

Stop Valves

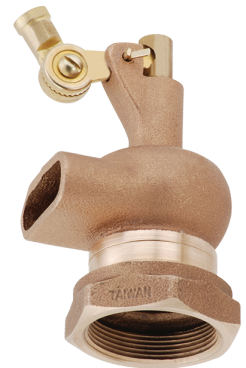
- Lead Free Version Available
- Brass
- 125 WOG
- NSF, UPC, CSA Approves
- Threaded, Sweat, Compression Ends
- Straight, Angle Globe Style
- Wheel, Cross Handle

Meter Valves

- Lead Free Brass
- With or Without Drain
- Angle
- Flare x IPS



Foot Valves



Float Valves



Meter Valves

Contact your local sales representative about other available products

Valves

Resilient Wedge Ductile Iron Gate Valves – Non Rising Stem

225 Series

- AWWA C515/Fire Main Gate Valve
- Flanged, Mechanical Joint, Flanged x Mechanical Joint, Threaded, C-900 Push On, Flange x Push On
- Ductile Iron Bodies, 300 PSI
- AWWA C550 Fusion Bonded Epoxy
- Fully Convertible with a Post Indicator Plate to Accommodate Both, Vertical and Wall Mount Post Indicators
- UL/FM Certified
- NSF-61/NSF-372 Listed
- Sizes 2" – 24" in Various Configurations
- True Tapping Valves Available
- Open-Right Valves Available

200 Series

- AWWA C509
- Flanged, Mechanical Joint
- Ductile Iron Bodies, 250 PSI
- AWWA C550 Fusion Bonded Epoxy
- Sizes 2" – 12"

Resilient Wedge Cast Iron Gate Valves – Non Rising Stem

10R Series/100M/100W

- Flanged, Threaded, IPS Push On, Mechanical Joint (14" and 16" only)
- Cast Iron Bodies
- AWWA C509 on 100M/100W 14" and 16" valves
- USC Approval on 10RW Valves
- Sizes 2" – 12"

Resilient Wedge Cast Iron and Ductile Iron Gate Valves – Rising Stem

105W/105U/305U

- Flanged Ends

105W

- AWWA C509
- UL/FM
- 200 PSI
- Sizes 3" – 16"

105U

- UL/FM, NYC Approved(MEA 257), USC Approved
- 200 PSI
- Sizes 3" -10"

205U

- AWWA C515-15
- UL/FM
- 300 PSI
- AWWA C550 Fusion Bonded Epoxy
- 4 Bosses – 1 Tapped With Plug
- Sizes 2-1/2" – 12"

205UCNY

- AWWA C515-15
- UL/FM
- 300 PSI
- AWWA C550 Fusion Bonded Epoxy
- 4 Bosses – 1 Tapped With Plug
- Sizes 2-1/2" – 12"

IBBM Cast Iron Gate Valves – Non Rising Stem

100F

- 200 WOG, 125 WSP
- Solid Wedge, Bronze Seat
- MSS-SP70
- Flanged
- Sizes 2"-24"

IBBM Cast Iron Gate Valves – Non Rising Stem

100S

- 200 WOG, 125 WSP
- Solid Wedge, Bronze Seat
- MSS-SP70
- WW-V58
- Threaded
- Sizes 2"- 8"

200F

- 200 WOG
- No Steam Service
- Solid Wedge, Bronze Seat
- Flanged
- Sizes 2-1/2"-10"

IBBM Cast Iron Gate Valves – Rising Stem

105F

- 200 WOG, 125 WSP
- Solid Wedge, Bronze Seat
- MSS-SP70
- Flanged
- Sizes 2"-24"

105S

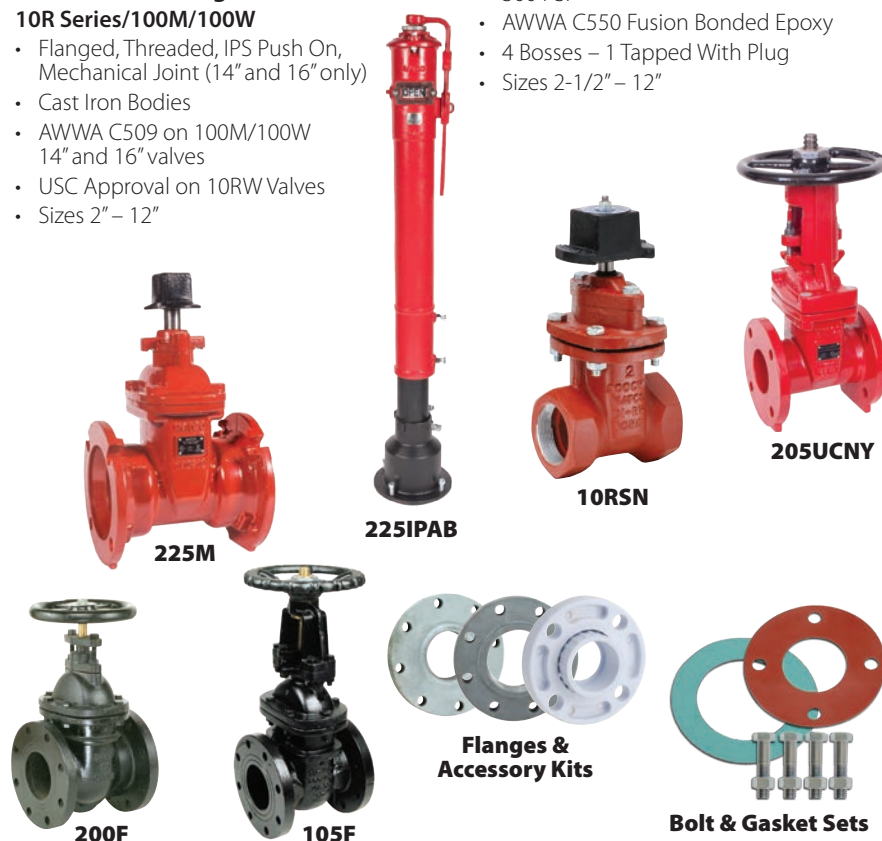
- 200 WOG, 125 WSP
- Solid Wedge, Bronze Seat
- MSS-SP70
- Threaded
- Sizes 2"-6"

Flanges & Accessory Kits

- Cast Iron Companion, Reducing & Blind Flange
- PVC Van Stone Flange
- MJ Accessory Kits
- T-Wrench

Bolt & Gasket Sets

- Non-Asbestos - Constructed of Aramid and Other Synthetic Fibers and Bonded with Nitrile Rubber (NBR)
- Red Rubber - Constructed of SBR (Styrene Butadiene Rubber)
- Bolts - ASTM A307 Grade A Zinc Plated Carbon Steel
- Nuts - ASTM A536 Zinc Plated Carbon Steel Finished Hex Nut



Contact your local sales representative about other available products

Valves

Resilient Seated Cast and Ductile Iron Flanged Swing Check Valves

120F/120S

- 200 PSI/CWP
- Cast Iron body with Bronze Seat and Resilient Disc
- MSS-SP71
- Full Epoxy Coating Inside and Out
- Vertical or Horizontal Applications
- Flanged Sizes 2"-12"
- Threaded Sizes 2"-8"

120W/120WC

- 200 PSI/CWP
- Ductile Iron Body
- AWWA C508, AWWA C550
- Fusion Bonded Epoxy Throughout
- Vertical or Horizontal Applications
- Outside Lever and Weight and Springs Kits Available
- Stainless Steel Exterior Bolt Package
- Sizes 3"-16"

120U

- 175 CWP
- Cast Iron Body
- UL/FM, NYC Approved(MEA257)
- Fusion Bonded Epoxy Throughout
- Bolted Cover with Lifting Bolt, 1 Tapped Boss with Plug
- Sizes 2-1/2"-12"



120WC



SC



115F



CVCUL



140F

IBBM Seated Cast Iron Flanged Swing Check Valves

115F/115S

- 200 CWP
- Cast Iron Body
- MSS-SP71
- Flanged Sizes 2"-12"
- Threaded Sizes 2"-5"

Cast Iron and Ductile Iron Wafer Check Valves

CVC

- Wafer Style
- Ductile Iron Body
- 300 WOG
- SS Springs and Shaft
- Double Door Bronze Disc
- Buna-N Seat
- Sizes 2"-16"
- UL Listed Option available. Sizes 4" – 8"

SC

- Silent Wafer Check
- Cast Iron Body
- 200 WOG
- Poppet Style
- SS Spring
- Bronze Disc and Seat
- Sizes 2"-12"

Cast Iron Y Strainers

140F/140S

- 200 WOG
- Standard Screen is Perforated 304 S.S. with 40 Mesh
- Flanged Sizes 2"-12"
- Threaded Sizes 1/4"-3"

Cast Iron, Ductile Iron, PVC Butterfly Valves

B1

- PVC
- 200 PSI
- EPDM Liners
- SS Stems
- Lever or Gear Operators
- Lever Sizes 2"-6"
- Gear Sizes 8"-12"

B5

- Ductile Iron body through 12" Cast Iron Body 14"-36"
- 200 PSI
- Wafer or Lug Pattern
- Lever or Gear Operators
- Ductile Iron, CF8M SS, and Aluminum Bronze Disc Available
- Buna-N, EPDM and Viton Liners Available
- Stem Extensions and Full Line of Replacement Parts Available

B6

- Cast Iron Body
- 200 PSI
- Ductile Iron Disc
- Buna-N Liners Only
- Lever or Gear Operators
- Wafer or Lug Style
- Sizes 2"-12"

B7

- Cast Iron Body
- 200 PSI
- Short Neck Design
- Double Stem Configuration
- Sizes 2"-12"



B5



B6

Contact your local sales representative about other available products

Fittings

150# Black & Galvanized Malleable Iron Fittings

- Lead Free
- Meets or Exceeds All Applicable ASTM and ANSI Standards
- UL / FM Certified
- 100% Pressure Tested
- Made in Thailand and China
- Stocked in Sizes 1/8" - 6" Diameter

300# Black & Galvanized Malleable Iron Fittings

- Lead Free
- Meets or Exceeds all Applicable ASTM and ANSI Standards
- UL / FM Certified
- 100% Pressure Tested
- Made in Thailand
- Stocked in Sizes 1/8" - 6" Diameter

Steel Plugs and Bushings

- Meets or Exceeds All Applicable ASTM and ANSI Standards
- Stocked from 1/8" - 2"
- Full Stock of Specialty Items Including Hex and Square Socket Plugs, Hex Head Plugs



150# Black & Galvanized Malleable Iron Fittings



300# Black & Galvanized Malleable Iron Fittings

Copper Pipe Fittings - Wrot

- Lead Free
- NSF 61 Compliant
- IAPMO Approved
- Meets ANSI 16 Standards
- Material Specifications to ASTM B88
- Stocked in Sizes 1/8" - 6"

Steel Merchant and API Line Couplings

- Meets or Exceeds All Applicable ASTM, ANSI and API Standards
- Merchant Couplings Stocked 1/8" - 6" Diameter
- API Line Couplings Stocked 1/8" - 12" Diameter
- Full Stock of Specialty Couplings, Such as Half Couplings and Right and Left Couplings



Steel Plugs and Bushings



Wrot Copper Fittings



Brass Fittings

Brass Fittings

- Lead Free Option Available
- Meets All Applicable ANSI Standards
- Bronze Material is to ASTM B62 Standard
- Stocked in Sizes 1/8" - 4" Diameter

Brass Fittings - Domestic

- Lead Free Brass
- Class 125 lbs & 250 lbs
- NSF/ANSI 61 Certified, CSA Approved
- Buy American Act and ARRA. DEFARS 252.225-7008
- Castings to ASME B16.15
- NPT Threads to ASME B1.20.1
- Stocked in Sizes 1/8" - 6" Diameter

Forged Steel Fittings & Unions

- Meets Applicable ANSI & MSS Standards
- Material Conforms with ASTM A105
- Material Test Reports (MTR'S) Available
- Stocked in Class 2000, 3000 and 6000
- Forged Steel Plugs & Bushing May be Used For Ratings up Through Class 6000 as Specified by ASME B16.11
- Stocked in Sizes 1/4" - 4" Diameter



Steel Merchant Couplings



Forged Steel Fittings

Contact your local sales representative about other available products

Fittings

Pex Fittings

- Lead Free
- NSF and UPC Approved
- Manufactured to ASTM Standard F1807
- Can be Used with PEX Tubing Manufactured to ASTM Standard F876-877
- Stocked in Sizes 3/8" - 1"

Poly Pex Cold Expansion Fittings - F1960

- Lead Free Compliant
- Modified Polyphenylsulfone (PPSU)
- Molded From RADEL® Resin
- Max. Temp. (no pressure): 320°F
- Max. Working Temp./Pressure: 210°F @ 150 PSI
- Approvals / Standards: cNSFus pw-G, NSF 14, NSF/ANSI 372, NSF/ANSI 61, CSA B137.5, U.P. Code, ASTM F1960
- Stocked in Sizes 1/2" - 1"



Pex Fittings



Dielectric Unions



Cast Iron Threaded Fittings

Poly Pex Pipe Fittings

- Lead Free Compliant
- Modified Polyphenylsulfone (PPSU)
- Molded From Acudel® Resin
- Max. Service Temp. 200°F
- Approvals: NSF 14, NSF/ANSI 61/Annex G, ASTM F2159, F877, CSA B137.5
- Stocked in Sizes 3/8" - 1"

Dielectric Unions

- Lead Free
- Used to Properly Connect Different Metal Piping
- Prevents the Deterioration of the Pipe Connections and Safety Induced Electrical Currents
- FIP x SWT, FIP x BPT, MIP x SWT, Flanged
- ASTM A-53 Galvanized Steel Sch. 40
- Meets ASTM F-492-95 and are Temperature Rated 100°C / 230°F
- Stocked in Sizes 1/2" - 4"



F1960 Poly Pex Cold Expansion Fittings



Chrome Plated Fittings

Cast Iron Threaded Fittings

- Class 125 lbs
- Conforms with ANSI B16.4 Standard
- Stocked in Sizes 1/2" - 4" Diameter

Chrome Plated Fittings

- Lead Free
- Meets NSF/ANSI Standard 61 Section 8 (2011) and Annex F
- Meets or Exceeds All Applicable ASTM Standards
- Stocked from 3/8" - 3/4" Diameters

CPVC Fittings

- Lead Free Chrome Plated Brass, Stainless Steel and F1960 Cold Expansion Pex
- Transition Adapters for Threaded Pipe
- UPC Approved
- CPVC x FIP, CPVC x MIP
- Stocked in Sizes 1/2" - 2" Diameter



Poly Pex Fittings



CPVC Adapter Fittings

Contact your local sales representative about other available products

Fittings

Meter Couplings, Elbows & Flanges

- Lead Free Brass
- Coupling - AB 1953 Certified. Sizes 1/2" - 2"
- Domestic Lead Free Brass Couplings AWWA C800 Compliant. Sizes 1/2" - 2"
- Elbow - 3/4" MIP x 1" FIP
- Flange - AB 1953 & NSF 61- Annex G Certified. Sizes 1-1/2" - 2". Kits and Domestic Options Available

Cast Iron Meter Flange Kits

- Oval - IPS Only
- Each Kit Includes: 2 Flanges, 2 Gaskets, 4 Nuts and 4 Bolts
- Stocked in Sizes 1-1/2" and 2"



Meter Couplings, Elbows & Flanges



Cast Iron Meter Flange Kits



Brass Fire Hydrant Adapters & Cap

Insert Fittings

- Lead Free Option Available
- Bronze, Galvanized and Stainless Steel
- Adapters, Couplings, Elbows, Tees and Bushings
- Stocked in Sizes 1/2" - 6" Both Regular and Reducing

Insert Stiffeners

- Flanged & Dimpled
- ISP - Fits IPS Polyethylene Pipe
- ISCP - Fits CTS Polyethylene Tube
- Stocked in Sizes 3/4" - 2"

Clampette Repair Clamps

- Patch and Full Wrap Clamps Available
- Available for Iron Pipe Size, Copper Tube Size and Actual Diameter Size
- #304 Stainless Steel Band
- Temperature Rating of -40°F to 212°F
- Pressure Rating of 150 PSI (Based on City Water Pressure)
- Stocked in 3", 6", 9" and 12" Lengths



Insert Fittings



Insert Stiffeners



Clampette Repair Clamps



PVC & CPVC Fittings



Compression Couplings

Brass Fire Hydrant Adapters & Cap

- Lead Free Brass
- Fire Hydrant, Double Male & Swivel Adapter
- Temperature Rating 180°F
- Pressure Rating CWP 300 PSI
- Stocked in Sizes 3/4" - 3"

PVC & CPVC Fittings

- PVC & CPVC Compression Couplings, Expandable PVC Coupling, Male x Compression PVC Adapter, PVC Union
- Fits Iron Pipe Size, Copper Tube Size, Sch. 40 & 80 Pipe
- Stocked in Sizes 1/2" - 6"

Compression Couplings

- Lead Free Option Available
- Long Pattern - 5" Length
- Short Pattern - 3" Length
- Stocked in Sizes 3/8" - 2"

Contact your local sales representative about other available products

Fittings

Cast Brass Sweat Adapter Fittings

- Lead Free Option Available
- Primarily Used for Heating Systems as a Transition Application
- Stocked in Sizes 3/8" - 1-1/2"

Drop Ear Elbow

- Lead Free Bronze - Stocked in Sizes 3/8" - 3/4"
- CPVC x SS - Stocked in 1/2"
- CPVC x Brass - Stocked in 1/2"
- Lead Free F1960 Cold Expansion Pex - Barb x FPT Brass - Stocked in 1/2"
- Molded CPVC End Piece with Slip Connection
- Pressure Rated to 100 PSI at 180°F / 150 PSI at 100°F
- Standards: CPVC 4120, ASTM D2846, NSF / ANSI 14, cUPC, CSA B137.6

Bronze TP Adapters

- Lead Free Bronze
- Female x TP, Male x TP, Sweat x TP
- Stocked in Sizes 1/2" - 4"

Groove Couplings

- Painted and Galvanized
- 300 PSI
- UL/FM Approved
- Ductile Iron Body ASTM A536
- EPDM Gaskets
- Stocked in Sizes 1" - 12"

Flexible Rubber Couplings

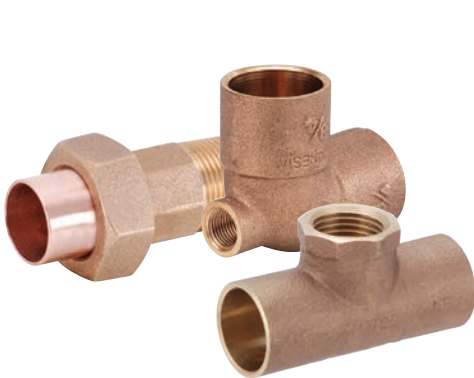
- Stainless Steel Bands
- Durable Rubber for All Schedule 40 Pipe Applications
- UPC Approved
- Stocked in Sizes 1-1/4" - 6" Both Regular and Reducing

No Hub Couplings — Standard Duty

- Installs at 60 pounds
- Has 5/16" hex head screws
- Conforms to ASTM-C1277
- 2 & 4 Band
- Stocked in Sizes 1-1/2" - 10"

No Hub Couplings — Heavy Duty

- Installs at 80 pounds
- Has 5/16" Hex Head Screws
- Conforms to ASTM-C1540
- 4 & 6 Band
- Stocked in Sizes 1-1/2" - 10"



Cast Brass Sweat Adapter Fittings



Drop Ear Elbow



Bronze TP Adapters



Groove Couplings



Flexible Rubber Couplings



Standard Duty No Hub Couplings



Heavy Duty No Hub Couplings

Contact your local sales representative about other available products

Notes

[illegible]

Nipples

Brass Nipples

- Lead Free Brass
- NSF Approved
- Meets or Exceeds All Applicable ANSI Standards
- Available in Lengths Through 60"
- Stocked from 1/8" - 4" Diameter

Brass Nipples - Domestic

- Lead Free Red Brass
- NSF Approved
- Pipe Meets ASTM B-43
- ANSI/ASME B1.20.1 Threads
- Stocked from 1/8" - 3" Diameter

Chrome Plated Brass Nipples

- Lead Free
- Meets or Exceeds All Applicable ASTM and ANSI Standards
- Available in Lengths up to 6"
- Stocked from 3/8" - 3/4" Diameter

Dielectric Nipples

- Used to Properly Connect Different Metal Piping
- Prevents the Deterioration of the Pipe Connections and Stray Induced Electrical Currents
- Thread x Thread, Groove x Groove, Thread x Groove
- ASTM A-53 Galvanized Steel Sch. 40
- Meets ASTM F-492-95 and are Temperature Rated 110°C/230°F
- Stocked from 3/4" - 4" Diameter



Brass Nipples



Dielectric Nipples



Grooved Nipples



Chrome Plated Brass Nipples



Schedule 40 & 80 Nipples



PVC Nipples



Schedule 80 Seamless Nipples



Stainless Steel Nipples

Grooved Nipples

- Schedule 40
- Grooved x Bevel and Grooved x Threaded
- Conforms to ASTM A53 and ASME B1.20.1
- All Grooves are Cut Grooved Per AWWA C606
- Stocked from 1-1/2" - 4" Diameter

Schedule 40 Steel Nipples Black and Galvanized

- Meets or Exceeds All Applicable ASTM and ANSI Standards
- Redit-Cut Pipe in Lengths up to 72"
- Various Assortments Including Slant 66 Packs
- Stocked from 1/8" - 8" Diameter

Schedule 80 Welded Steel Nipples Black & Galvanized

- Meets or Exceeds All Applicable ASTM and ANSI Standards
- Various Assortments Including Slant 66 Packs
- Stocked from 1/8" - 4" Diameter

Schedule 80 Black Seamless Steel Nipples

- Meets or Exceeds All Applicable ASTM and ANSI Standards
- Hydrostatic Test (2500 PSI)
- Material Test Reports (MTR'S) Available
- Stocked from 1/8" - 4" Diameter

Schedule 80 PVC Pipe Nipples

- Meets ASTM D-1784, D-1785, A733, F-1498
- Meets ASME B1.20.1
- Machined Only
- Available in Long Lengths up to 48"
- Specialty Items Such as TOE Nipples are Available
- Stocked from 1/4" - 6" Diameter

Sch. 40 Welded Stainless Steel Nipples

- 304 / 316 Stainless Steel
- Stainless Steel Conforms to ASTM A312
- Dimensions & Ends Conform to ASTM A733
- Threads Conform to ASTM B1.20.1
- RoHS Compliant
- Material Test Reports (MTR'S) Available
- Stocked from 1/8" - 4" Diameter

Contact your local sales representative about other available products

Faucets

Matco-Norca Faucets are sold exclusively within the plumbing wholesale channel.



All Matco-Norca Faucets come with a Lifetime Finish & Function Warranty Regardless of the Application

Matco-Norca incorporates both an agency sales force and a direct sales force to ensure your faucet needs are met **On Time, Every Time** through one of our 5 strategically placed US based distribution centers.

Whether you're looking for entry level offerings for new construction, or luxury offerings for your showroom, our breadth of products and finishes are certain to meet your needs... Furthermore, because we've sold exclusively through the wholesale channel for 68 years, **you will never find Matco-Norca faucets in a "Big Box" store!**

Matco-Norca Delivers Complete Families That Include:

- Kitchens
- 4" Centersets
- 8" Widespreads
- Tub & Showers, Shower Only, Tub Only and Valve Only
- Roman Tubs
- Bar Faucets
- Laundry Faucets
- ADA Compliant Hand Showers
- Job Packs
- Pot Fillers
- Rough-In Valves:
 - MIP
 - CC
 - PEX B
 - PEX A F1960 Cold Expansion

Matco-Norca offers multiple ADA compliant configurations and meets all flow rate requirements as outlined by the California Energy Commission. We are also very proud to be celebrating our ten year anniversary as an EPA WaterSense program partner!

Matco-Norca meets or exceeds the guidelines as set forth by the United States Safe Drinking Water Act which is the principal federal law in the United States intended to ensure safe drinking water for the public. We take water conservation and your health very seriously and will continue our efforts in making this world a better place for future generations.

See our Full Line Faucet Product Portfolio and Plumbing Specialties Catalog for our Residential and Light Commercial product offerings.



EPA WaterSense® certified on select lavatory faucets and showerheads.



All applicable faucets comply with the Safe Drinking Water Act.



Chrome



Stainless Steel



Brushed Nickel



Oil Rubbed Bronze

Contact your local sales representative about other available products

Faucet Families



Hand Showers



Builder Light



Padova



Angelic



Positano



Classic



Job Packs / Rough-In Valves



Value Engineered

Contact your local sales representative about other available products

Notes

[illegible]

Plumbing Specialties

- Aerators
- Bath & Shower Drains / Standing Waste
- Cast Iron Drains
- Closet Flanges
- Deck Plate Cleanout
- Escutcheons
- Faucet Handles, Stems & Seats
- Hand Held Shower Accessories
- Lead Free Multi Turn Supply Valves
- Lead Free Quarter Turn Supply Valves
- Pop Up & Grid Drain Assemblies
- Repair Clamps
- Saddle Tee & Valve
- Shower Heads, Arms & Flanges
- Sink Strainers
- Slip Nuts
- Specialty Faucets
- Spuds
- Threaded Sealing Tap
- Traps
- Tub Spouts & Toilet Tank Accessories
- Tubular Products
- Washing Machine & Dishwasher Specialties
- Water Supply Connectors



Contact your local sales representative about other available products

Industrial - Valves

Carbon Steel & Stainless Steel Flanged Ball Valves - Two Piece

- Full Port
- W.P. ANSI Class 150
- W.T. -4°F -392°F
- Investment Casting
- Blow-out Proof Stem
- Live-loading Design
- Locking Device
- Sizes 1" - 6"

Stainless Steel Threaded Ball Valves - One Piece

- Reduced Port
- W.P. 1000 WOG
- W.T. -4°F -392°F
- 316 Stainless Steel Body
- Investment Casting
- Blow-out Proof Stem
- Locking Handle
- Thread Type: ASTM B1.20.1 (NPT)
- Sizes 1/4" - 2"

Carbon Steel & Stainless Steel Threaded Ball Valves - Two Piece

- Reduced Port
- W.P. 1/4"-1" -2000 WOG
- 1-1/4" -2" 1500 WOG
- W.T. -4°F -392°F
- Investment Casting
- Blow-out Proof Stem
- Locking Handle
- Thread Type: ASTM B1.20.1 (NPT)
- Sizes 1/4" - 2"

Stainless Steel Threaded Ball Valves - Two Piece

- Full Port
- W.P. 1000 WOG
- W.T. -4°F -392°F
- 316 Stainless Steel Body
- Investment Casting
- Blow-out Proof Stem
- Locking Handle
- Thread Type: ASME B1.20.1 (NPT)
- Size 1/4" - 3"

Carbon Steel & Stainless Steel Threaded & Socket Weld Ball Valves - Three Piece

- Full Port
- W.P. 1000 WOG
- W.T. -4°F -392°F
- Investment Casting
- Blow-out Proof Stem
- Locking Handle
- Thread Type: ASME B1.20.1 (NPT)
- Socket Weld Ends Conform to: ANSI B16.11
- Size 1/4" - 4"



Carbon Steel & Stainless Steel Flanged Ball Valves - Two Piece



Carbon Steel & Stainless Steel Threaded Ball Valves - Two Piece



Stainless Steel Threaded Ball Valves - One Piece



Carbon Steel Threaded & Socket Weld Ball Valves - Three Piece

Mill Test Reports Available

Industrial - Valves

Forged Gate Valves

- Stainless Steel ASTM A182/316L
- Forged Carbon Steel ASTM A105
- Class 800
- Maximum Pressure 1975 PSI
- Maximum Temperature 850
- Bolted Bonnet
- API 602
- NPT or Socket Weld
- Sizes 1/4" - 2"

Forged Globe Valves

- Stainless Steel ASTM A182/316L
- Forged Carbon Steel ASTM A105
- Class 800
- Maximum Pressure 1975 PSI
- Maximum Temperature 850
- Bolted Bonnet
- API 602
- NPT or Socket Weld
- Sizes 1/4" - 2"

Forged Check Valves

- Stainless Steel ASTM A182/316L
- Forged Carbon Steel ASTM A105
- Class 800
- Maximum Pressure 1975 PSI
- Maximum Temperature 850
- Bolted Bonnet
- API 602
- NPT or Socket Weld
- Sizes 1/4" - 2"

Flanged Cast Steel Gate Valves

- ASTM A216 WCB
- Maximum Pressure 285 PSI
- Maximum Temperature 1000
- Outside Screw & Yoke
- API 600
- 150 LB. Flanged Connections
- Sizes 2" - 12"

Flanged Cast Steel Globe Valves

- ASTM A216 WCB
- Maximum Pressure 285 PSI
- Maximum Temperature 1000
- Outside Screw & Yoke
- Bolted Bonnet
- 150 LB. Flanged Connections
- Sizes 2" - 12"

Flanged Cast Steel Swing Check Valves

- ASTM A216 WCB
- Maximum Pressure 285 PSI
- Maximum Temperature 1000
- Bolted Cover
- 150 LB. Flanged Connections
- Sizes 2" - 12"

Stainless Steel Gate Valves

- 316 Stainless Steel
- W.P. 200 WOG
- Maximum Temperature 392
- Non-Rising Stem
- NPT Connections
- Sizes 1/2" - 2"

Stainless Steel Globe Valves

- 316 Stainless Steel
- W.P. 200 WOG
- Maximum Temperature 392
- Non-Rising Stem
- NPT Connections
- Sizes 1/2" - 2"

Stainless Steel Swing Check Valves

- 316 Stainless Steel
- W.P. 200 WOG
- Maximum Temperature 392
- NPT Connections
- Sizes 1/2" - 2"

Stainless Steel Y Strainer

- 316 Stainless Steel
- W.P. 800 WOG
- Maximum Temperature 392
- 40 Mesh Screen
- NPT Connections
- Sizes 1/2" - 2"



Forged Gate Valves



Forged Gate Valves



Flanged Cast Steel Gate Valves



Stainless Steel Gate Valves



Stainless Steel Globe Valves



Forged Check Valves



Flanged Cast Steel Globe Valves



Flanged Cast Steel Swing Check Valves



Stainless Steel Swing Check Valves



Stainless Steel Y Strainer

Mill Test Reports Available

Industrial - Fittings, Flanges, & Nipples

Forged Steel Branch Outlets

- Material Conforms with ASTM A105N & MSS-SP-97
- Material Test Reports (MTR'S) Available
- Straight Through Bore Design
- Stocked in Threaded, Socket Weld & Butt Weld
- Stocked in Sizes 1/4" - 4" Diameter

Forged Steel Fittings & Unions

- Meets Applicable ANSI & MSS Standards
- Material Conforms with ASTM A105
- Material Test Reports (MTR'S) Available
- Stocked in Class 2000, 3000 and 6000
- Forged Steel Plugs & Bushing May be used for Ratings up Through Class 6000 as Specified by ASME B16.11
- Stocked in Sizes 1/4" - 4" Diameter

Sch. 40 Stainless Steel Nipples

- 304 / 316 Stainless Steel
- Stainless Steel Conforms to ASTM A312
- Dimensions & Ends Conform to ASTM A733
- Threads Conform to ASTM B1.20.1
- RoHS Compliant
- Material Test Reports (MTR'S) Available
- Stocked from 1/8" - 4" Diameter



Forged Steel Branch Outlets



Forged Steel Fittings

Schedule 80 Black Seamless Steel Nipples

- Meets or Exceeds All Applicable ASTM and ANSI Standards
- Hydrostatic Test (2500 PSI)
- Material Test Reports (MTR'S) Available
- Stocked from 1/8" - 4" Diameter

Stainless Steel Fittings

- 304 / 316 Stainless Steel
- Casting Conforms to ASTM A351
- NPT Threads Conform to ASME B1.20.1
- Manufacturing Facility is ISO 9001:2008 Certified
- RoHS Compliant
- Stocked in Sizes 1/8" - 4" Diameters



Stainless Steel Nipples



Schedule 80 Seamless Nipples



Stainless Steel Fittings

Weld Fittings

- Wall Dimensions: Standard & Extra Heavy
- Configurations: 90° and 45° Elbows, Straight and Reducing Tees, Concentric and Eccentric Reducers, Weld Caps
- Specifications: ASTM/ASME A/SA 234-WPB, ANSI B16.9, B16.28, and B16.25
- Stocked in Sizes: 150# 2" - 12", 300# 2" - 8"

Weld Flanges

- Pressure Ratings: 150# and 300#
- Configurations: Weld Necks - Standard & Extra Heavy Bores, Slip Ons, Threaded, Lap Joints, Blinds, Socket Weld - Standard & Extra Heavy Bores
- Specifications: ASTM/ASME A/SA 105, ANSI B16.5 and B16.25
- Stocked in Sizes 2" - 12"



Weld Flanges



Weld Fittings

Mill Test Reports Available

Direct Mount Packages

BEV99 Series Ball Valve

- Two Piece
- Pressure Rated for 1000 WOG
- Complete 316 Stainless Steel Construction
- FNPT End Connections
- PTFE Seats and Seals
- Full Ported
- Sizes 1/2" - 2"



BEV99



EZ99



BZ99

BZ99 Series Ball Valve

- Three Piece
- Pressure Rated for 600 PSI
- Bronze Body (Not for Potable Water Use)
- 316SS Ball and Stem
- FNPT End Connections
- PTFE Seats and Seals
- Sizes 1/2" - 2"

SB99 Series Ball Valve

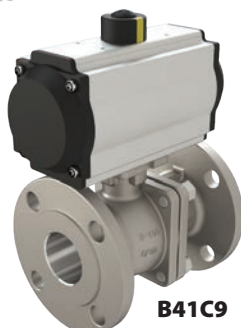
- Three Piece
- 316SS Construction
- Tri-Clamp End Connections
- Interior Finish of 20RA
- PTFE Seats and Seals
- Silicon Free
- Ideal for Food & Beverage
- Sizes 1/2" - 4"



SB99

B41C Series Ball Valve

- Two Piece
- Standard Fire Safe Certification to API 607 Anti-static
- ANSI 150# Flanged, Full Port
- Complete 316 Stainless Steel Construction
- TFM1600 Seat Material With Live-loaded Stem Packing Ensuring Seal-tight Pressure Containment Even Under Thermal Cycling
- Sizes 1/2" - 8"



B41C9

MB51 Series Ball Valve

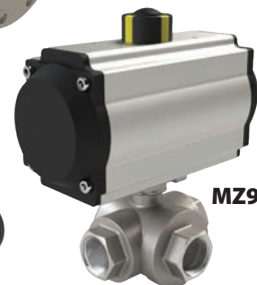
- Flanged 3-Way
- L-Port and T-Port Flow Paths
- 316SS Construction
- Full Port
- ANSI 150#
- Positive Shut-off on Any of the Three Ports
- Sizes 1" - 4"



MB51

MZ99 Series Ball Valve

- Pressure Rated for 1000 WOG
- Complete 316 Stainless Steel Construction
- FNPT End Connections
- Positive Shut-off on Any of the Three Ports
- PTFE Seats and Seals
- Full Ported
- Sizes 1/2" - 2"



MZ99

SL9 Series Butterfly Valve

- ANSI 150# Body Style
- Epoxy Coated Ductile Iron Body
- 316 Stainless Steel Disc & Stem
- Wafer or Lug Body
- Available with EPDM or BUNA Seats



SL9



CALIFORNIA
TEXAS
ILLINOIS
GEORGIA
NEW YORK

5595 Fresca Dr., La Palma CA 90623
1150 Silber Rd., Houston TX 77055
278 Windy Point Dr., Glendale Heights, IL 60139
113 Industrial Blvd., Americus, GA 31709
PO Box 27, R.22, Brewster NY 10509

WEB: www.matco-norca.com

• Toll Free: 866-532-8306 • Fax: 866-532-8307
• Toll Free: 800-935-5456 • Fax: 713-680-2999
• Toll Free: 844-412-5068 • Fax: 800-640-2252
• Toll Free: 800-433-7526 • Fax: 800-533-5134
• Toll Free: 800-431-2082 • Fax: 845-278-9056

EMAIL: mail@matco-norca.com